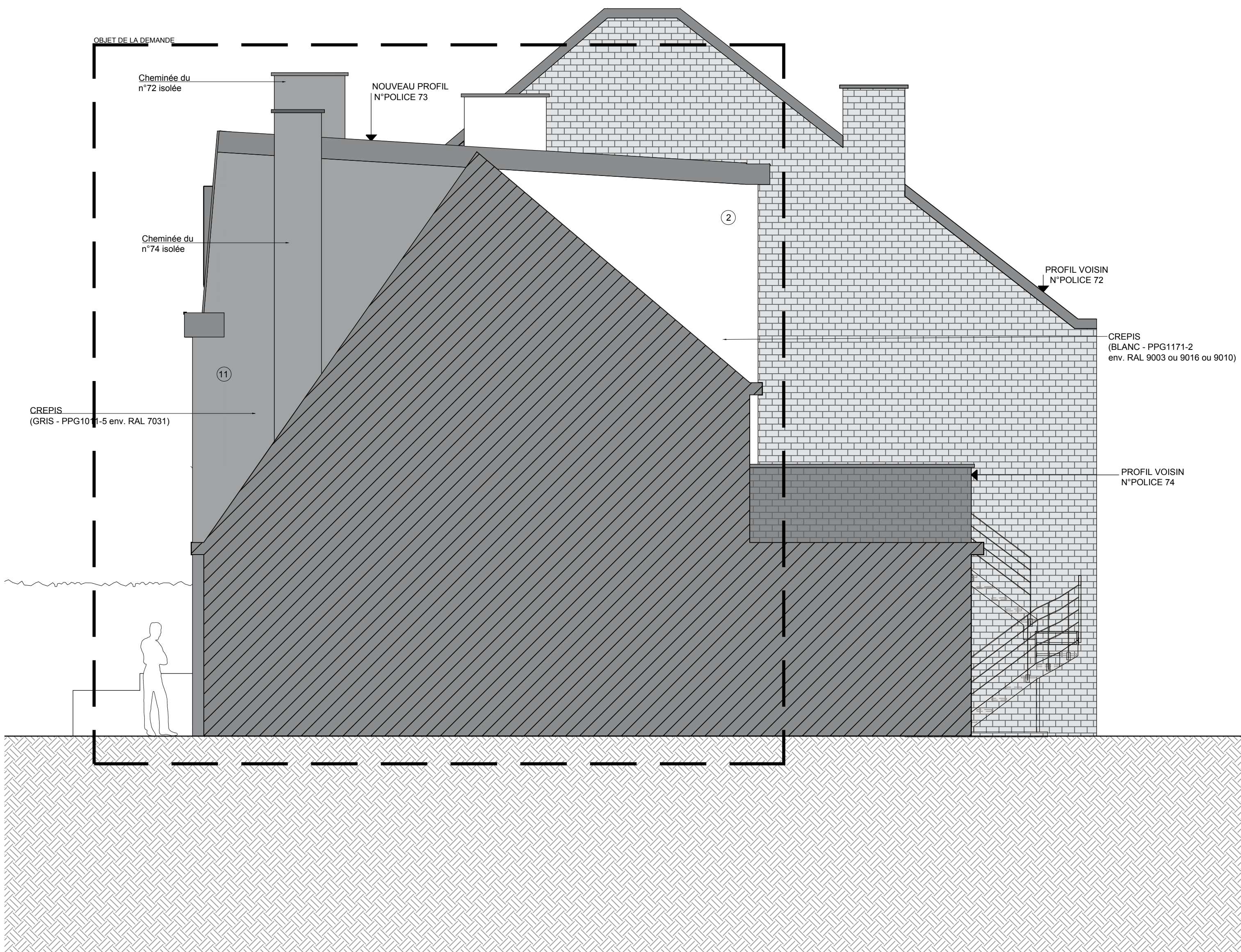
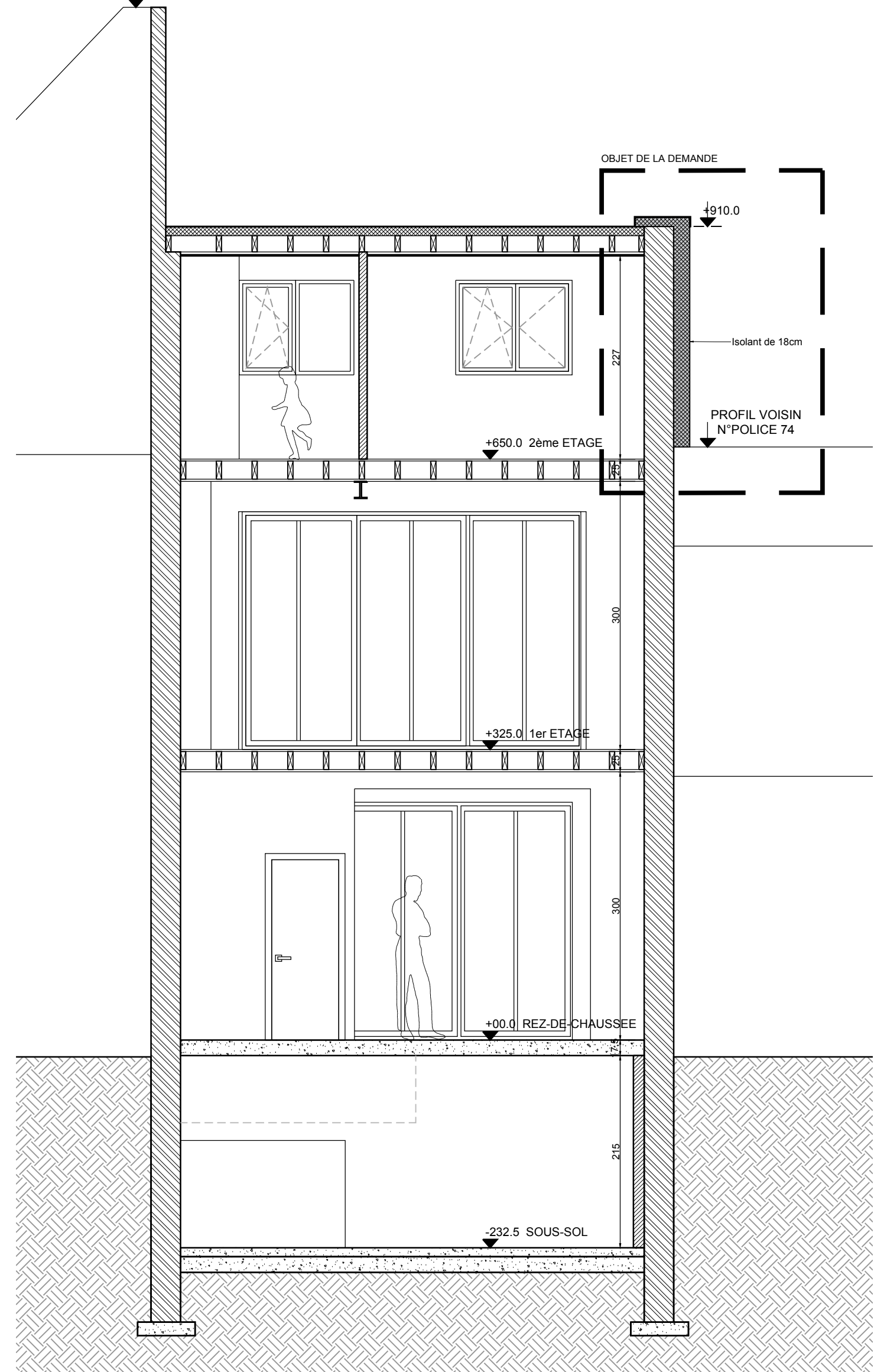


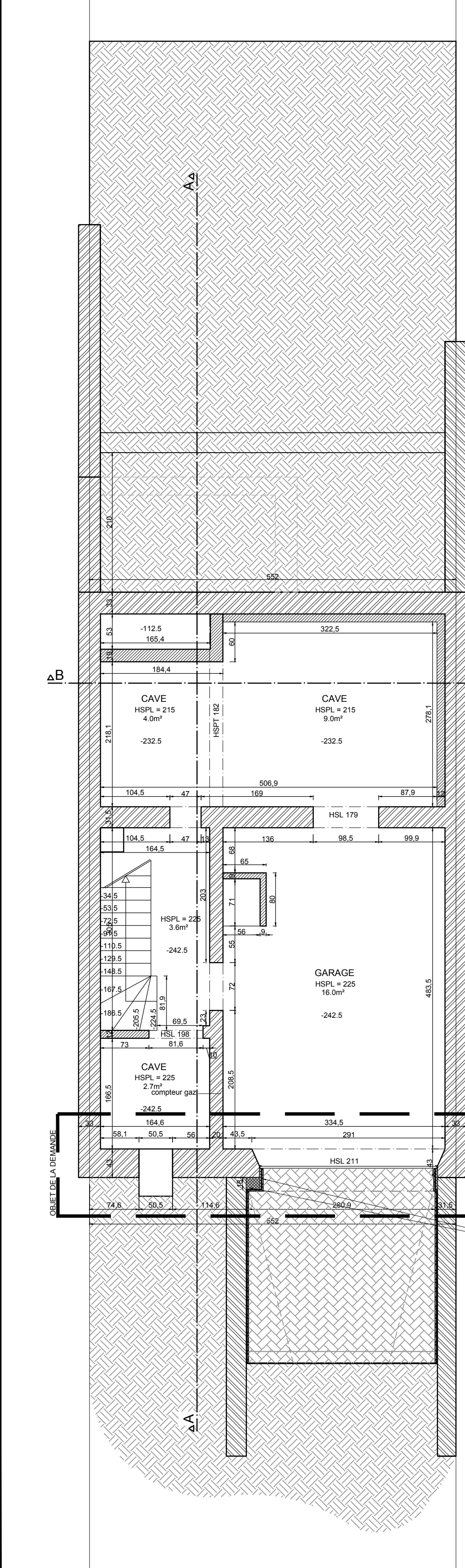
COUPE A-A



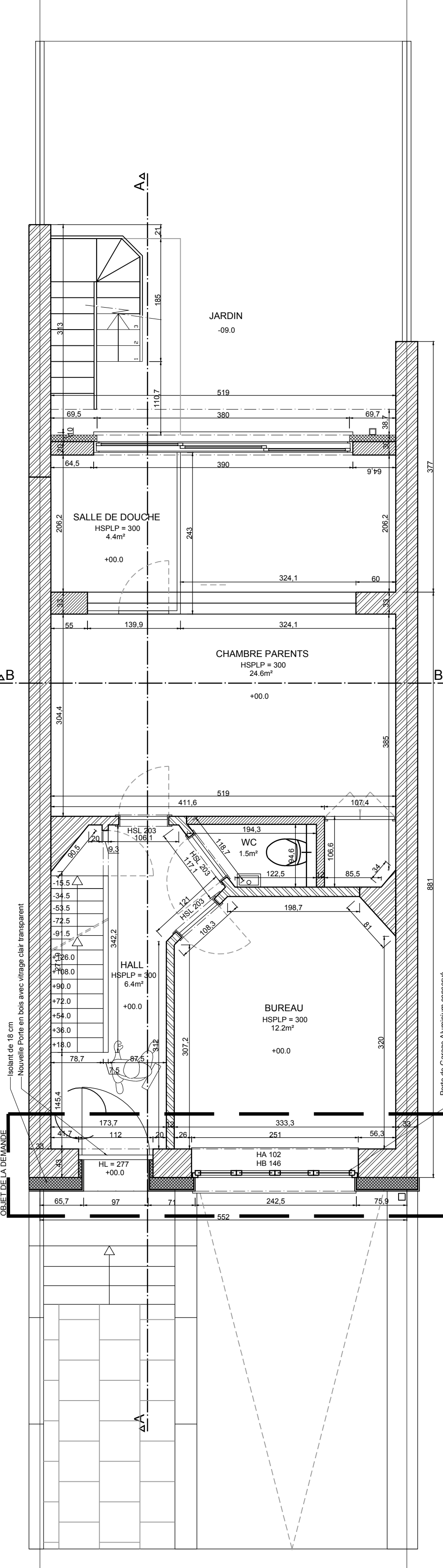
PROFIL VOISIN



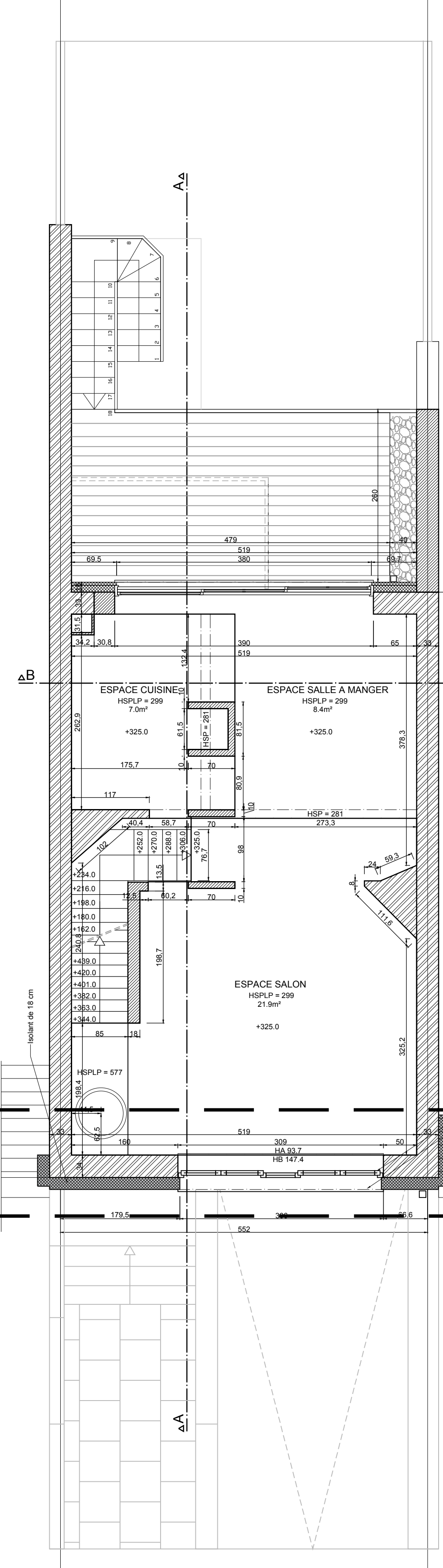
COUPE B-B



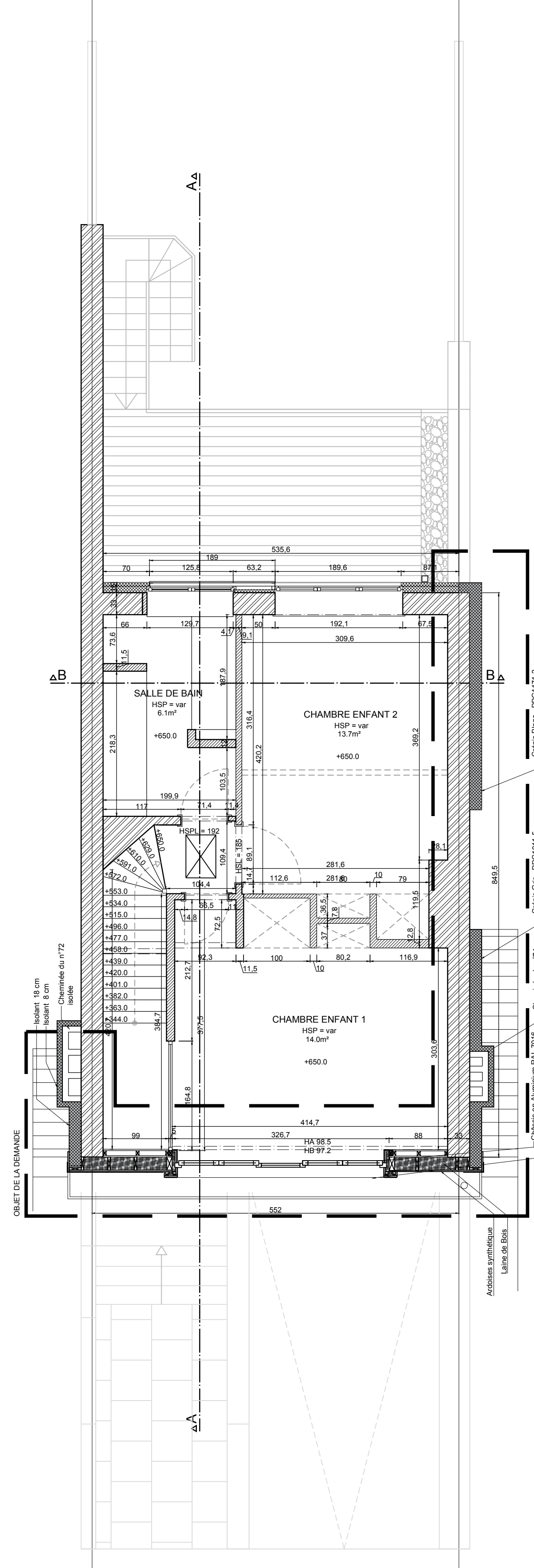
SOUS-SOL



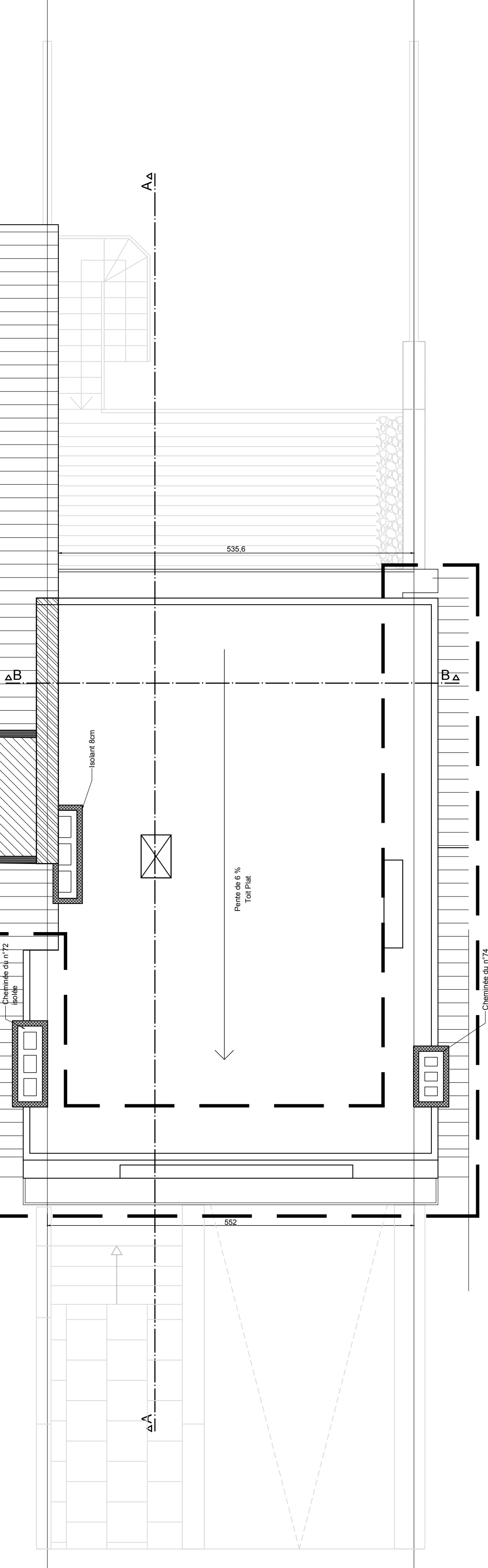
REZ-DE-CHAUSSEE



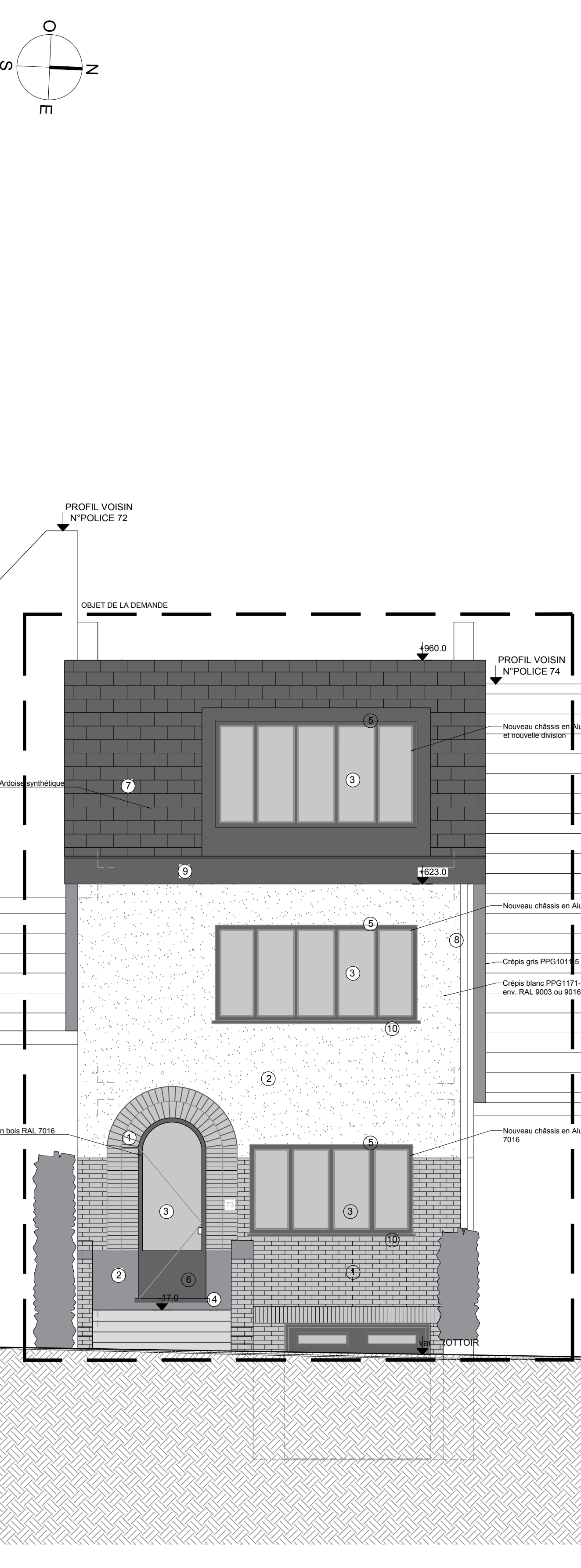
1er ETAGE



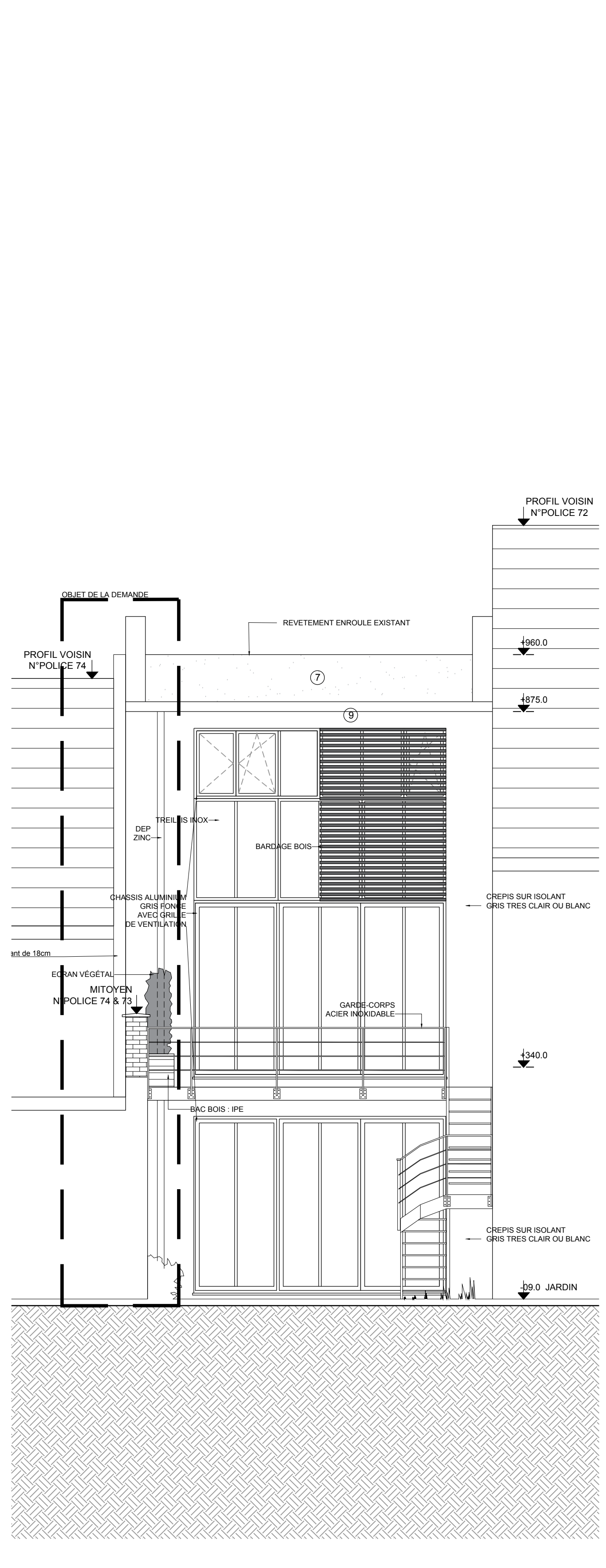
2ème ETAGE



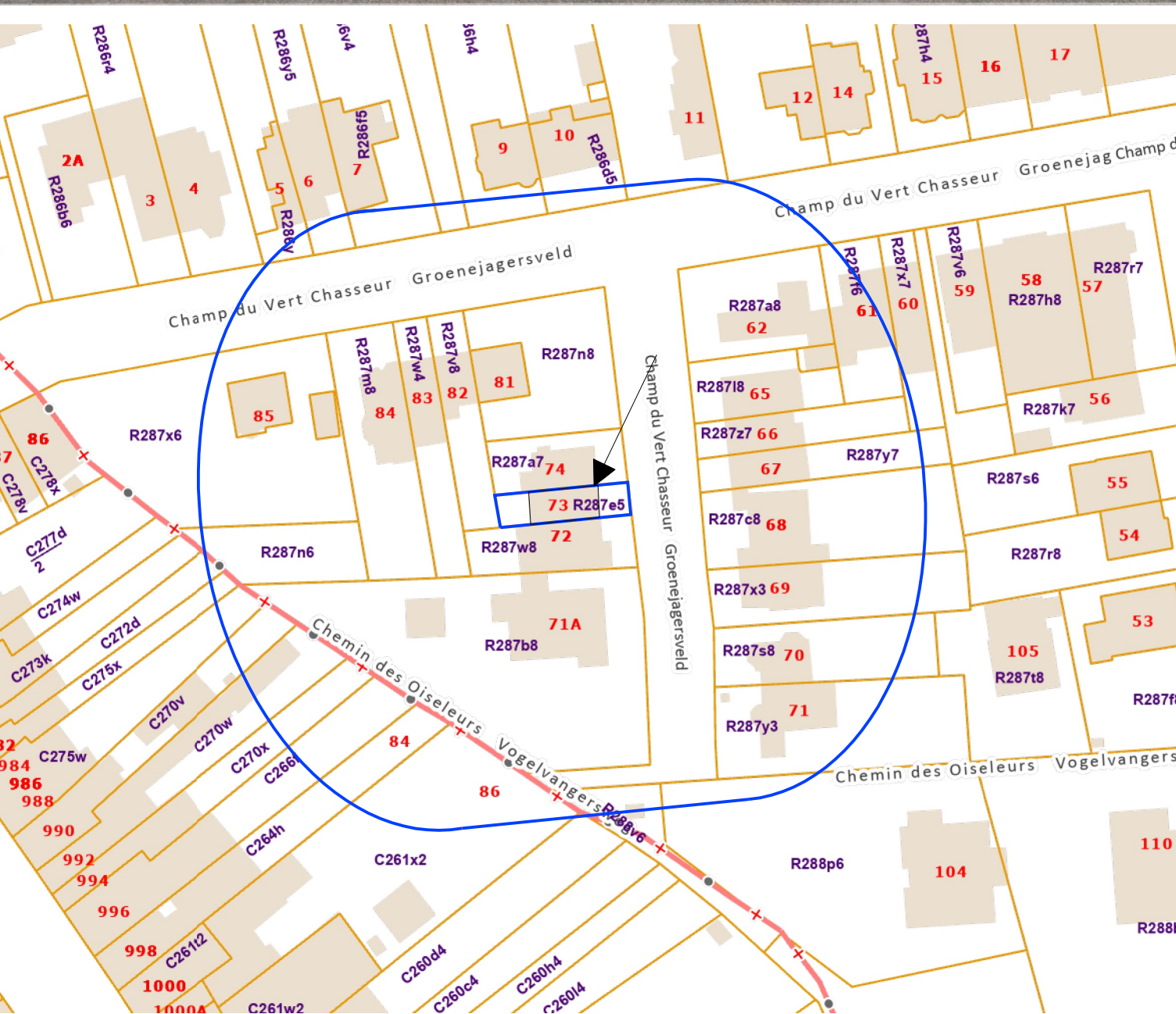
TOITURE



FACADE AVANT



FACADE ARRIERE



Plan de situation : 1/1000

- 1 BRIQUE DE PAREMENT
- 2 CREPIS BLANC - PPG1171-2 = RAL 9003
- 3 VITRAGE CLAIR
- 4 SEUIL EN PIERRE BLEUE
- 5 CHASSIS EN ALUMINIUM (GRIS - RAL 7016)
- 6 PORTE EN BOIS (GRIS ANTHRACITE - RAL 7016)
- 7 ARDOISE SYNTHETIQUE (GRIS)
- 8 DEP
- 9 CORNICHE EN ZINC (GRIS - RAL 7016)
- 10 TABLETTE EN ALU (GRIS ANTHRACITE - RAL 7016)
- 11 CREPIS (GRIS - PPG1011-5 env. RAL 7031)

B A IND. MODIFICATIONS		DATE	
SIGNATURE MAÎTRE D'OUVRAGE		TITRE DU PLAN Plans, Coupes et Elévations + plan de situation	
SIGNATURE ARCHITECTE		SITUATION PROJETEE	
CODE PROJET 41 CVC	TYPE VAR	INVENTAIRE gfo	NUMERO DE PLAN 11.001 C
DATE 03/09/2025		DATE 03/09/2025	